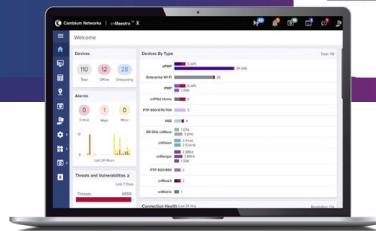


# cnMatrix EX3000 Series Switches

## EX3000 Series Quick Look

- Multi-gig access ports
- Zero-touch deployments
- Policy-based automation
- Auto-device profiling and segmentation
- Non-blocking, line-rate architecture with fully featured L2/L3 switching



### Cloud-Managed, Enterprise-Grade Switching

The cnMatrix™ next-generation switching platform offers a high-performance, secure Ethernet switching solution to support a wide variety of applications. The platform provides:

- Simple and scalable cloud (or on-premise) control with cnMaestro™ Network Management
- Zero-touch deployment that makes installation plug-and-play easy
- Policy-based automation eliminating manual and time-consuming configuration during adds, moves, and changes of network devices
- Enhanced security with automated device profiling and segmentation
- Unified wired, wireless, security, SD-WAN, and fiber solution as part of Cambium’s ONE Network

The cnMatrix series of fully managed switches delivers full Layer 2 and Layer 3 capabilities with enhanced access security. Depending on the model, the cnMatrix EX3000 Series offers SFP+ (10 Gbps) or SFP-28 (25 Gbps) fiber uplink ports. The series also comes with dual removable power supplies and features up to 90W of PoE per port. These switches come with a 5-year limited lifetime warranty.

Feature	EX3028R-P	EX3052R-P	EX3030RM-P	EX3052RM-P
10/100/1000 Access Ports	24	48	0	24
2.5G/1G Access Ports	0	0	24	24
Uplink Ports	4 x 10G SFP+	4 x 10G SFP+	6 x 25G SFP28	4 x 25G SFP28
PoE+ 802.3af/at/bt (30W)	12	24	0	24
PoE++ 802.3af/at/bt (60W)	12	24	0	0
PoE++ 802.3af/at/bt (90W)	0	0	24	24
Throughput	128 Gbps	176 Gbps	420 Gbps	368 Gbps

## cnMatrix EX3000 Series Access Switches

### Switch Specifications

	EX3028R-P	EX3052R-P	EX3030RM-P	EX3052RM-P
10/100/1000 Ports	24	48	0	24
2.5G/1G Ports	0	0	24	24
Uplink Ports	4 x 10G SFP+	4 x 10G SFP+	6 x 25G SFP28	4 x 25G SFP28
Throughput	128 Gbps	176 Gbps	420 Gbps	368 Gbps
Forwarding Rate in Mpps (64 Byte Packets)	120	120	120	120
Packet Buffer	1.5 MB	1.5 MB	3 MB	3 MB
Energy Efficient Ethernet	✓	✓	✓	✓
PoE+ Enabled Ports 802.3af/at/bt (30W)	12	24	0	24
PoE++ Enabled Ports 802.3af/at/bt (60W)	12	24	0	0
PoE++ Enabled Ports 802.3af/at/bt (90W)	0	0	24	24
Serial Console	✓	✓	✓	✓
USB	✓	✓	✓	✓
Out-of-Band Management Port	✓	✓	✓	✓
Rack Mount Kit	✓	✓	✓	✓
Internal Fans	2	2	3	3
Reset Button	✓	✓	✓	✓
MAC Address Table Size	16K	16K	32K	32K
Flash Storage	256 MB	256 MB	256 MB	256 MB
DRAM	1 GB	1 GB	1 GB	1 GB
VLANs (simultaneous)	4K	4K	4K	4K
QinQ	Yes	Yes	Yes	Yes
LACP/Trunking	8 LAGs/8 ports per LAG	8 LAGs/8 ports per LAG	8 LAGs/8 ports per LAG	8 LAGs/8 ports per LAG
QoS Priority Queues	8	8	8	8
PVRST	64	64	64	64
Ingress/Egress ACL	512	512	512	512
L3 Interfaces	64	64	64	<b>64</b>
Static ARP Entries	512	512	512	512
ARP Entries	1000	1000	1000	1000
Static Routes	64	64	64	64
Dynamic Routing	512	512	512	512
IGMP Multicast Groups	512	512	512	512
Policy-Based Automation (PBA)	✓	✓	✓	✓

## cnMatrix EX3000 Series Access Switches

### Specifications – All Models

<b>Quality of Service</b>	ACL mapping/marking of ToS/DSCP (COS) ACL mapping marking of 802.1p ACL mapping to priority queue DiffServ support Honoring DSCP and 802.1p (CoS) Traffic shaping/metering Priority queue management using Weighted Round Robin (WRR), Strict Priority (SP), and a combination of WRR and SP	<b>Layer 2 Features</b>	802.1d, RSTP, 802.1s - MSTP, PVRST ERPSv1—Ethernet ring protection switching VLAN, port, protocol, 802.1q QinQ Auto MDI/MDIX BPDU guard, root guard, loop guard BPDU filtering IGMP snooping v1/v2/v3*, fast leave IGMP proxy LLDP/LLDP MED Static MAC Flow control per port Port mirroring/SPAN: Port based, ACL based, VLAN based Port isolation/private VLAN edge Link aggregation groups (static/LACP) Jumbo frame (9K) DoS protection Ping/TraceRoute/ICMPv6
<b>Traffic Management</b>	ACL-based inbound rate-limiting policies Broadcast, multicast, and unknown unicast rate limiting (storm control) Inbound rate limiting per port Outbound rate limiting per port/queue		
<b>Security</b>	802.1x authentication MAC authentication/MAB Guest VLAN/failover VLAN authorization Local & radius authentication/authorization (dynamic VLAN assignment) Radius/Tacacs/Tacacs+ Secure shell Secure copy (SCP) Local username/password Port security DHCP snooping Dynamic ARP inspection		
<b>Security (ACL)</b> <small>Permit/deny actions for inbound IP and layer 2 traffic classification based on:</small>	Source/destination IP address TCP/UDP source/destination port IP protocol type Type of Service (ToS) or differentiated services (DSCP) field Source/destination MAC address EtherType IEEE 802.1p user priority VLAN ID RFC 1858—Security considerations for IP fragment filtering	<b>Layer 3 Features</b>	Inter-VLAN routing Static ARPs Static routes DHCP relay w/multiple helpers per VLAN Dynamic routing – RIPv1/v2 Dynamic routing – OSPFv2 Route redistribution Dynamic ARP inspection
<b>Management</b>	cnMaestro Industry standard Command Line Interface (CLI) DHCP client Embedded web management (HTTP/HTTPS) DHCP server USB file management and storage	Out-of-band Ethernet management SSH/SSH v2 SNMP v1/v2/v3 Simple Network Time Protocol (SNTP) Local/remote system logging (syslog client) Policy-based automation (PBA)	TFTP/SFTP Telnet client/server IPv6 management Password management

\* Feature to be included in a future release.

## cnMatrix EX3000 Series Access Switches

### Hardware Specifications

	EX3028R-P	EX3052R-P	EX3030RM-P	EX3052RM-P
Power Supply	CRPS dependent	CRPS dependent	CRPS dependent	CRPS dependent
Max Switch Power (with Traffic)	61W	82.5W	69.5W	85.6W
MTBF (Hours)	547,054	471,517	276,875.99	361,265.17
Flash Storage	256 MB	256 MB	256 MB	256 MB
DRAM	1 GB	1 GB	1 GB	1 GB
Weight	3.679 kg (8.11 lb)	4.904 kg (10.81 lb)	5.06 kg (11.16 lb)	6.656 kg (14.67 lb)
Dimensions (H x W x L)	4.44 x 44.15 x 28 cm	4.4 x 44.15 x 39.4 cm	4.4 x 28 x 44 cm	4.4 x 37 x 44 cm
CPU Speed	800 MHz	800 MHz	1.2 GHz	1.2 GHz
LEDs per Port	Link/Activity, PoE	Link/Activity, PoE	Link/Activity, PoE	Link/Activity, PoE
PoE+ Power Budget	CRPS	CRPS	CRPS	CRPS
PoE + Voltage	54V	54V	54V	54V
PoE Max Power per Port	30W, 60W	30W, 60W	30W, 90W	30W, 90W
Rack Mountable	Yes 1U	Yes 1U	Yes 1U	Yes 1U
Temperature Ranges	0° to 50°C (32° to 122°F)	0° to 50°C (32° to 122°F)	0° to 50°C (32° to 122°F)	0° to 50°C (32° to 122°F)
Operating Humidity	55° at 95% RH	55° at 95% RH	0%–95% RH	0%–95% RH
Storage Temperature	-40° to 70°C (-40° to 158°F)	-40° to 70°C (-40° to 158°F)	-40 to 70°C (-40° to 158°F)	-40 to 70°C (-40° to 158°F)

### Acoustic Noise dBA per Switch (Ambient Temperature)

EX3028R-P	1200W CRPS 73.3dB <-33C, 73.4dB 30C-40C, 73.6dB >43C 930W CRPS 71dB <-33C, 71.2dB 30C-40C, 71.5dB >43C 600W CRPS 69.9dB <-33C, 70dB 30C-40C, 70.4dB >43C
EX3052R-P	1200W CRPS 76.4dB <-33C, 76.5dB 30C-40C, 76.96dB >43C 930W CRPS 72.8dB <-33C, 73dB 30C-40C, 73.3dB >43C 600W CRPS 72dB <-33C, 72.2dB 30C-40C, 72.5dB >43C
EX3030RM-P	1200W CRPS 65.9dB <-33C, 65.9dB 30C-40C, 65.9dB >43C 930W CRPS 64dB <-33C, 64.2dB 30C-40C, 64.3dB >43C 600W CRPS 65.5dB <-33C, 65.5dB 30C-40C, 65.5dB >43C
EX3052RM-P	1200W CRPS 66.3dB <-33C, 66.1dB 30C-40C, 66.9dB >43C 930W CRPS 66.1dB <-33C, 65.9dB 30C-40C, 66.4dB >43C 600W CRPS 65dB <-33C, 64.8dB 30C-40C, 65.3dB >43C

## cnMatrix EX3000 Series Access Switches

### IEEE Standards

<b>Core Switching Features</b>	IEEE 802.1ab—Link Layer Discovery Protocol (LLDP) IEEE 802.1D—Spanning tree compatibility IEEE 802.1p—Ethernet priority with user provisioning and mapping IEEE 802.1s—Multiple spanning tree compatibility IEEE 802.1Q—Virtual LANs with port-based VLANs IEEE 802.1X—Port-based authentication 802.3az—Energy Efficient Ethernet	<b>Advanced Layer 2 Features</b>	Authentication, Authorization, and Accounting* (AAA) IEEE 802.1ad (QinQ) Broadcast/Multicast/Unknown unicast storm recovery DHCP Snooping IGMP Snooping Querier Independent VLAN Learning (IVL) support Jumbo Ethernet frame support Port MAC locking Port mirroring Protected ports Static MAC filtering
<b>VLAN Support</b>	IEEE 802.1W—Rapid spanning tree compatibility IEEE 802.3—10BASE-T IEEE 802.3u—100BASE-T IEEE 802.3ab—1000BASE-T IEEE 802.3ac—VLAN tagging IEEE 802.3ad—Link aggregation IEEE 802.3x —Flow control Bridged Local Area Networks - Amendment 07: Multiple Registration Protocol	<b>Layer 3 Features</b>	Inter-VLAN Routing Static ARP Static Routes RFC 2131 – DHCP Relay RFC 2328 – OSPF Version 2 RFC 2453 – RIP Version 2 PIM-SM – Multicast routing
<b>IEEE 802.1Q-2003</b>	RFC 4541—Considerations for Internet Group Management Protocol (IGMP) Snooping switches ANSI/TIA-1057—LLDP-media endpoint discovery (MED)		

\*Feature to be included in a future release.

## cnMatrix EX3000 Series Access Switches

### System Facilities

Event and error logging facility	RFC 894—Transmission of IP datagrams over Ethernet networks	RFC 2030—Simple Network Time Protocol (SNTP)
Run-time and configuration download capability	RFC 896—Congestion control in IP/TCP networks	RFC 2132—DHCP options and BOOTP vendor extensions
PING utility	RFC 951—BOOTP	RFC 2819—Remote Network Monitoring Management Information Base
FTP Transfers via IPv4/IPv6	RFC 1034—Domain names - concepts and facilities	RFC 2865—RADIUS client
RFC 768—UDP	RFC 1035—Domain names - implementation and specification	RFC 2869—RADIUS Extensions
RFC 783—TFTP	RFC 1321—Message digest algorithm	RFC 3579—RADIUS support for EAP
RFC 791—IP	RFC 1534—Interoperability between BOOTP and DHCP	RFC 3580—IEEE 802.1X RADIUS usage guidelines
RFC 792—ICMP	RFC 2021—Remote network monitoring management information base version 2	RFC 3164—BSD syslog protocol
RFC 793—TCP		RFC 3580—802.1X RADIUS Usage Guidelines
RFC 826—ARP		

### Management

SNMP v1, v2, and v3	RFC 4251—SSH protocol architecture	RFC 2246—TLS protocol, version 1.0
SSH 1.5 and 2.0	RFC 4716—SECSH public key file format	RFC 2818—HTTP over TLS
RFC 4252—SSH authentication protocol	RFC 4419—Diffie-Hellman group exchange for SSH transport layer protocol	RFC 3268—AES cipher suites for transport layer security
RFC 4253—SSH transport layer protocol	SSL 3.0 and TLS 1.0	Telnet
RFC 4254—SSH connection protocol		Web GUI

### SNMP MIBs

<b>Enterprise MIBs for Full Configuration Support of Switching Features</b>	RFC 1213—MIB II	RFC 2618—RADIUS authentication client MIB	RFC 2925—Definitions of managed objects for remote ping, traceroute, and lookup operations
	RFC 1493—Bridge MIB	RFC 2674—VLAN MIB	RFC 3273—RMON groups 1, 2, and 3
	RFC 1612—DNS resolver MIB extensions	RFC 2737—Entity MIB version 2*	RFC 3291—Textual conventions for internet network addresses
	RFC 1643—Definitions of managed objects for Ethernet-like interface types	RFC 1213 MIB II	RFC 3434—RMON Groups 1, 2, and 3
	RFC 2233—Interfaces group MIB using SMI v2	RFC 2819—RMON groups 1, 2, 3, and 9	RFC 4022—TCP-MIB
	RVC 2613—SMON MIB	RFC 2863—IF-MIB	RFC 4113—UDP-MIB

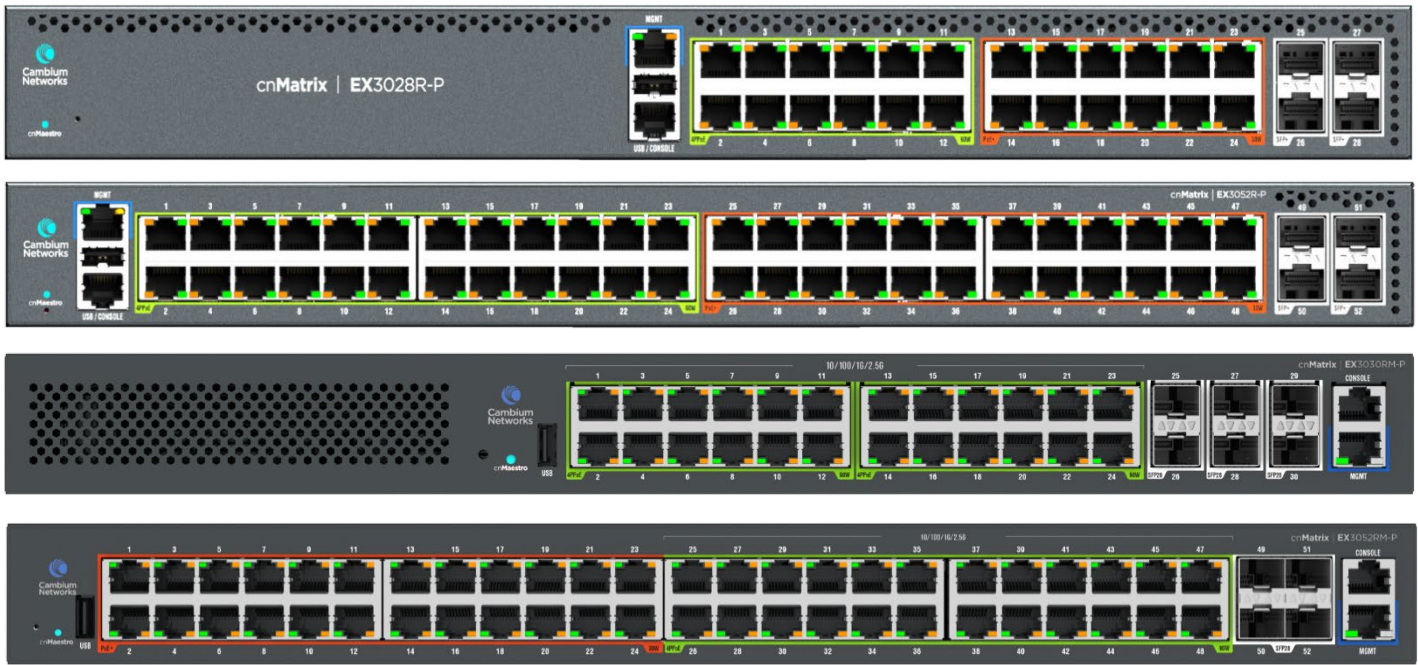
<b>Quality of Service MIBs</b>	MIBs for full configuration support of DiffServ, ACL, and Cos functionality
	RFC 3289—Management information base for DiffServ architecture (read-only)

### Quality of Service

<b>Classify Traffic Based on Same Criteria as ACLs and Optionally</b>	Mark the IP DSCP or precedence header fields
	Police the flow to a specific rate with two- color aware support
	RFC 2474—Definition of the differentiated services field (DS field) in the IPv4 and IPv6 headers
	RFC 2475—An architecture for differentiated services
	RFC 2597—Assured forwarding per-hop behavior

\* Feature to be included in a future release.

### cnMatrix EX3000 Series Access Switches



EX3028R-P

EX3052R-P / CRPS



EX3030RM-P

EX3052RM-P



## cnMatrix EX3000 Series Access Switches

### cnMatrix Ordering Information

<b>EX3028R-P</b>	<b>MXEX3028GxPA10</b>	Intelligent Ethernet Switch, 24 1G (12 PoE+ ports and 12 4PPoE ports (60W)) and 4 SFP+ ports, Dual/Removeable power supplies (not included) No power cord, non-USA
<b>EX3052R-P</b>	<b>MXEX3052GxPA10</b>	Intelligent Ethernet Switch, 48 1G (24 PoE+ ports and 24 4PPoE ports (60W)) and 4 SFP+ ports, Dual/Removeable power supplies (not included) No power cord, non-USA
<b>EX3028R-P</b>	<b>MXEX3028GxPA11</b>	Intelligent Ethernet Switch, 24 1G (12 PoE+ ports and 12 4PPoE ports (60W)) and 4 SFP+ ports, Dual/Removeable power supplies (not included) No power cord, USA only
<b>EX3052R-P</b>	<b>MXEX3052GxPA11</b>	Intelligent Ethernet Switch, 48 1G (24 PoE+ ports and 24 4PPoE ports (60W)) and 4 SFP+ ports, Dual/Removeable power supplies (not included) No power cord, USA only
<b>EX3030RM-P</b>	<b>MXEX3030MxPA10</b>	Intelligent Ethernet Switch, 24 MG(2.5G) ports with 4PPoE(90W) , and 6 SFP28, 25Gbps ports. Dual/Removeable power supplies (not included) - no pwr cord, non-USA only
<b>EX3030RM-P</b>	<b>MXEX3030MxPA11</b>	Intelligent Ethernet Switch, 24 MG(2.5G) ports with 4PPoE(90W) , and 6 SFP28, 25Gbps ports. Dual/Removeable power supplies (not included) - no pwr cord, USA only
<b>EX3052RM-P</b>	<b>MXEX3052MxPA10</b>	Intelligent Ethernet Switch, 24 1G PoE ports(30W), 24 MG(2.5G) ports with 4PPoE(90W), and 4 SFP28, 25Gbps ports. Dual/Removeable power supplies (not included) - no pwr cord, non-USA only
<b>EX3052RM-P</b>	<b>MXEX3052MxPA11</b>	Intelligent Ethernet Switch, 24 1G PoE ports(30W), 24 MG(2.5G) ports with 4PPoE(90W), and 4 SFP28, 25Gbps ports. Dual/Removeable power supplies (not included) - no pwr cord, USA Only
<b>CRPS</b>	<b>MXCRPSAC600A0</b>	600W total Power, no power cord
<b>CRPS</b>	<b>MXCRPSAC930A0</b>	930W total Power, no power cord
<b>CRPS</b>	<b>MXCRPSAC1200A0</b>	1200W total Power, no power cord
<b>CRPS</b>	<b>MXCRPSDC600A0</b>	600W total Power, 36v–72v, includes 3m cable connector
<b>CRPS</b>	<b>MXCRPSDC930A0</b>	930W total Power, 36v–72v, includes 3m cable connector
<b>CRPS</b>	<b>MXCRPSDC1200A0</b>	1200W total Power, 36v–72v, includes 3m cable connector
<b>Power Cord</b>	<b>N000900L092A</b>	AC line cord, US Type B, 15A, 1.2 m C13 connector
<b>Rack Ears</b>	<b>MX-EXTXFULLA-1</b>	cnMatrix rack mount kit: Full-width switch
<b>Transceiver</b>	<b>SFP-10G-SR</b>	10G SFP+ MMF SR Transceiver, 850 nm. -40°C to 85°C (-40°F to 185°F)
<b>Transceiver</b>	<b>SFP-1G-SX</b>	1G SFP MMF SX Transceiver, 850 nm. -40°C to 85°C (-40°F to 185°F)
<b>Transceiver</b>	<b>SFP-10G-LR</b>	10G SFP+ SMF LR Transceiver, 1310 nm. -40°C to 85°C (-40°F to 185°F)
<b>Transceiver</b>	<b>SFP-1G-LX</b>	1G SFP SMF LX Transceiver, 1310 nm. -40°C to 85°C (-40°F to 185°F)
<b>Transceiver</b>	<b>SFP-1G-Copper</b>	1000Base-T (RJ45) SFP Transceiver. -40°C to 85°C (-40°F to 185°F)
<b>Transceiver</b>	<b>SFP-10G-Copper</b>	10G Base-T (RJ45) SFP Transceiver. 0°C to 70°C (-40°F to 185°F)
<b>Transceiver</b>	<b>SFP-25G-SR</b>	25G SFP28 MMF. 850nm, 100m. -40C to 85C
<b>Transceiver</b>	<b>SFP-25G-LR</b>	25G SFP28 SMF. 1310nm, 10km. -40C to 85C

## cnMatrix EX3000 Series Access Switches

### cnMaestro X Ordering Information

<b>MSX-SUB-3028R-P-1</b>	cnMaestro X for one EX3028R-P. Creates one Device Tier20 slot. Includes Cambium Care Pro support. 1-year subscription
<b>MSX-SUB-3028R-P-3</b>	cnMaestro X for one EX3028R-P. Creates one Device Tier20 slot. Includes Cambium Care Pro support. 3-year subscription
<b>MSX-SUB-3028R-P-5</b>	cnMaestro X for one EX3028R-P. Creates one Device Tier20 slot. Includes Cambium Care Pro support. 5-year subscription
<b>MSX-SUB-3052R-P-1</b>	cnMaestro X for one EX3052R-P. Creates one Device Tier20 slot. Includes Cambium Care Pro support. 1-year subscription
<b>MSX-SUB-3052R-P-3</b>	cnMaestro X for one EX3052R-P. Creates one Device Tier20 slot. Includes Cambium Care Pro support. 3-year subscription
<b>MSX-SUB-3052R-P-5</b>	cnMaestro X for one EX3052R-P. Creates one Device Tier20 slot. Includes Cambium Care Pro support. 5-year subscription
<b>MSX-SUB-EX3030RM-P-1</b>	cnMaestro X for one EX3030RM-P switch. Creates one device Tier20 slot. Includes Cambium Care Pro support. 1-year subscription
<b>MSX-SUB-EX3030RM-P-3</b>	cnMaestro X for one EX3030RM-P switch. Creates one device Tier20 slot. Includes Cambium Care Pro support. 3-year subscription
<b>MSX-SUB-EX3030RM-P-5</b>	cnMaestro X for one EX3030RM-P switch. Creates one device Tier20 slot. Includes Cambium Care Pro support. 5-year subscription
<b>MSX-SUB-EX3052RM-P-1</b>	cnMaestro X for one EX3052RM-P switch. Creates one device Tier20 slot. Includes Cambium Care Pro support. 1-year subscription
<b>MSX-SUB-EX3052RM-P-3</b>	cnMaestro X for one EX3052RM-P switch. Creates one device Tier20 slot. Includes Cambium Care Pro support. 3-year subscription
<b>MSX-SUB-EX3052RM-P-5</b>	cnMaestro X for one EX3052RM-P switch. Creates one device Tier20 slot. Includes Cambium Care Pro support. 5-year subscription

## cnMatrix EX3000 Series Access Switches

### Extended Warranty and Cambium Care Part Numbers:

<b>CCADV-SUP-EX3028R-P-1</b>	Cambium Care Advanced, 1-year support for one EX3028R-P. 24x7 TAC support, SW updates, and NBDS advance replacement for HW
<b>CCADV-SUP-EX3028R-P-3</b>	Cambium Care Advanced, 3-year support for one EX3028R-P. 24x7 TAC support, SW updates, and NBDS advance replacement for HW
<b>CCADV-SUP-EX3028R-P-5</b>	Cambium Care Advanced, 5-year support for one EX3028R-P. 24x7 TAC support, SW updates, and NBDS advance replacement for HW
<b>CCADV-SUP-EX3052R-P-1</b>	Cambium Care Advanced, 1-year support for one EX3052R-P. 24x7 TAC support, SW updates, and NBDS advance replacement for HW
<b>CCADV-SUP-EX3052R-P-3</b>	Cambium Care Advanced, 3-year support for one EX3052R-P. 24x7 TAC support, SW updates, and NBDS advance replacement for HW
<b>CCADV-SUP-EX3052R-P-5</b>	Cambium Care Advanced, 5-year support for one EX3052R-P. 24x7 TAC support, SW updates, and NBDS advance replacement for HW
<b>CCADV-SUP-EX3030RM-P-1</b>	Cambium Care Advanced, 1-year support for one EX3030RM-P Wireless AP. 24x7 TAC support, SW updates, and NBDS advance replacement for HW
<b>CCADV-SUP-EX3030RM-P-3</b>	Cambium Care Advanced, 3-year support for one EX3030RM-P Wireless AP. 24x7 TAC support, SW updates, and NBDS advance replacement for HW
<b>CCADV-SUP-EX3030RM-P-5</b>	Cambium Care Advanced, 5-year support for one EX3030RM-P Wireless AP. 24x7 TAC support, SW updates, and NBDS advance replacement for HW
<b>CCADV-SUP-EX3052RM-P-1</b>	Cambium Care Advanced, 1-year support for one EX3052RM-P Wireless AP. 24x7 TAC support, SW updates, and NBDS advance replacement for HW
<b>CCADV-SUP-EX3052RM-P-3</b>	Cambium Care Advanced, 3-year support for one EX3052RM-P Wireless AP. 24x7 TAC support, SW updates, and NBDS advance replacement for HW
<b>CCADV-SUP-EX3052RM-P-5</b>	Cambium Care Advanced, 5-year support for one EX3052RM-P Wireless AP. 24x7 TAC support, SW updates, and NBDS advance replacement for HW
<b>CCADV-UPG-EX3028R-P-1</b>	Cambium Care Advanced Add-on to cnMaestro X, 1-year support for one EX3028R-P. 24x7 TAC support, SW updates, and NBDS advance replacement for HW
<b>CCADV-UPG-EX3028R-P-3</b>	Cambium Care Advanced Add-on to cnMaestro X, 3-year support for one EX3028R-P. 24x7 TAC support, SW updates, and NBDS advance replacement for HW
<b>CCADV-UPG-EX3028R-P-5</b>	Cambium Care Advanced Add-on to cnMaestro X, 5-year support for one EX3028R-P. 24x7 TAC support, SW updates, and NBDS advance replacement for HW
<b>CCADV-UPG-EX3052R-P-1</b>	Cambium Care Advanced Add-on to cnMaestro X, 1-year support for one EX3052R-P. 24x7 TAC support, SW updates, and NBDS advance replacement for HW
<b>CCADV-UPG-EX3052R-P-3</b>	Cambium Care Advanced Add-on to cnMaestro X, 3-year support for one EX3052R-P. 24x7 TAC support, SW updates, and NBDS advance replacement for HW
<b>CCADV-UPG-EX3052R-P-5</b>	Cambium Care Advanced Add-on to cnMaestro X, 5-year support for one EX3052R-P. 24x7 TAC support, SW updates, and NBDS advance replacement for HW
<b>CCADV-UPG-EX3030RM-P-1</b>	Cambium Care Advanced Add-on to cnMaestro X, 1-year support for one EX3030RM-P. 24x7 TAC support, SW updates, and NBDS advance replacement for HW
<b>CCADV-UPG-EX3030RM-P-3</b>	Cambium Care Advanced Add-on to cnMaestro X, 3-year support for one EX3030RM-P. 24x7 TAC support, SW updates, and NBDS advance replacement for HW
<b>CCADV-UPG-EX3030RM-P-5</b>	Cambium Care Advanced Add-on to cnMaestro X, 5-year support for one EX3030RM-P. 24x7 TAC support, SW updates, and NBDS advance replacement for HW
<b>CCADV-UPG-EX3052RM-P-1</b>	Cambium Care Advanced Add-on to cnMaestro X, 1-year support for one EX3052RM-P. 24x7 TAC support, SW updates, and NBDS advance replacement for HW
<b>CCADV-UPG-EX3052RM-P-3</b>	Cambium Care Advanced Add-on to cnMaestro X, 3-year support for one EX3052RM-P. 24x7 TAC support, SW updates, and NBDS advance replacement for HW
<b>CCADV-UPG-EX3052RM-P-5</b>	Cambium Care Advanced Add-on to cnMaestro X, 5-year support for one EX3052RM-P. 24x7 TAC support, SW updates, and NBDS advance replacement for HW

## cnMatrix EX3000 Series Access Switches

### Cambium Care Pro Ordering Information

CCPRO-SUP-EX3028R-P-1	Cambium Care Pro, 1-year support for one EX3028R-P. 24x7 TAC support, SW updates
CCPRO-SUP-EX3028R-P-3	Cambium Care Pro, 3-year support for one EX3028R-P. 24x7 TAC support, SW updates
CCPRO-SUP-EX3028R-P-5	Cambium Care Pro, 5-year support for one EX3028R-P. 24x7 TAC support, SW updates
CCPRO-SUP-EX3052R-P-1	Cambium Care Pro, 1-year support for one EX3052R-P. 24x7 TAC support, SW updates
CCPRO-SUP-EX3052R-P-3	Cambium Care Pro, 3-year support for one EX3052R-P. 24x7 TAC support, SW updates
CCPRO-SUP-EX3052R-P-5	Cambium Care Pro, 5-year support for one EX3052R-P. 24x7 TAC support, SW updates
CCPRO-SUP-EX3030RM-P-1	Cambium Care Pro, 1-year support for one EX3030RM-P. 24x7 TAC support, SW updates
CCPRO-SUP-EX3030RM-P-3	Cambium Care Pro, 3-year support for one EX3030RM-P. 24x7 TAC support, SW updates
CCPRO-SUP-EX3030RM-P-5	Cambium Care Pro, 5-year support for one EX3030RM-P. 24x7 TAC support, SW updates
CCPRO-SUP-EX3052RM-P-1	Cambium Care Pro, 1-year support for one EX3052RM-P. 24x7 TAC support, SW updates
CCPRO-SUP-EX3052RM-P-3	Cambium Care Pro, 3-year support for one EX3052RM-P. 24x7 TAC support, SW updates
CCPRO-SUP-EX3052RM-P-5	Cambium Care Pro, 5-year support for one EX3052RM-P. 24x7 TAC support, SW updates

### ABOUT CAMBIUM NETWORKS

Cambium Networks enables service providers, enterprises, industrial organizations, and governments to deliver exceptional digital experiences and device connectivity with compelling economics. Our ONE Network platform simplifies management of Cambium Networks' wired and wireless broadband and network edge technologies. Our customers can focus more resources on managing their business rather than the network. We make connectivity that just works.

[cambiumnetworks.com](http://cambiumnetworks.com)