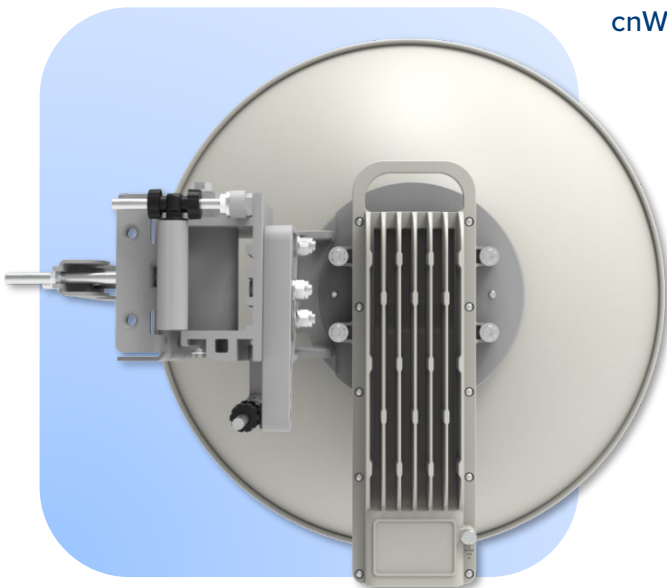
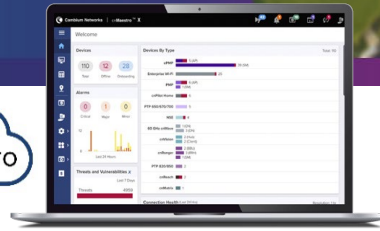


cnWave 5G Fixed Customer Premises Equipment

Customer Premises Equipment Quick

A simple, affordable yet powerful 5G fixed wireless solution for 24–29 GHz spectrum.

- Throughput of over 400 Mbps aggregate
- 5G NR protocol using SDR architecture to enable continuous evolution and enhancements



cnWave™ 5G Fixed Customer Premises Equipment (CPE) Key Features

- Up to 400 Mbps of throughput at the Customer Premises Equipment (CPE)
- Gigabit Ethernet interface provides the maximum transfer rates to the device
- 802.3at PoE to allow standards-based powering of devices
- One radio model capable of operation from 24.25 GHz to 29.50 GHz spectrum, covering the most common 5G bands globally
- Optimized for throughput, high-gain integrated dish to maximize range

cnWave 5G Fixed Customer Premises Equipment

Product Model Numbers

C100 CPE Radio	C280500C001A
Antenna Assembly	C280500D001A

Spectrum

Frequency Range	24.25–29.50 GHz
Channel Width	50, 56, 100, 112 MHz channels

Interface

MAC (Media Access Control) Layer	5G NR air interface
Physical Layer	OFDM
Ethernet Interface	100/1000BaseT, full duplex, rate auto negotiated (802.3 compliant)
User Traffic	Ethernet Layer 2
Network Management	IPv4/IPv6 (dual stack), HTTP/HTTPS, TFTP, SNMPv2c and v3 Cambium Networks cnMaestro™
VLAN	802.1ad (DVLAN Q-inQ), 802.1Q with 802.1p priority Dynamic port VID learning

Security

Encryption	FIPS-197 128-bit AES, 256-bit AES (requires optional license for attached access point)
------------	--

Performance

Channel Size	DL MCS	DL Sensitivity (dB)	UL MCS	UL Sensitivity (dB)
112 MHz	MCS 24	-98.5	MCS 23	-78.7
	MCS 6	-118.1	MCS 6	-98.2
56 MHz	MCS 22	-98.4	MCS 22	-82.7
	MCS 6	-119.2	MCS 6	-101.2
Maximum EIRP	+52 dBm			
Hybrid ARQ	Yes, DL and UL			
Maximum Deployment Range	Up to 10 km (6.4 mi)			
Latency	10 ms, typical			
Quality of Service	4 levels			

cnWave 5G Fixed Customer Premises Equipment

Antenna

Antenna Connection	Integrated reflector dish
Integrated Antenna Peak Gain	36 dBi
Beam width - Azimuth	2°
Beam width - Elevation	2°

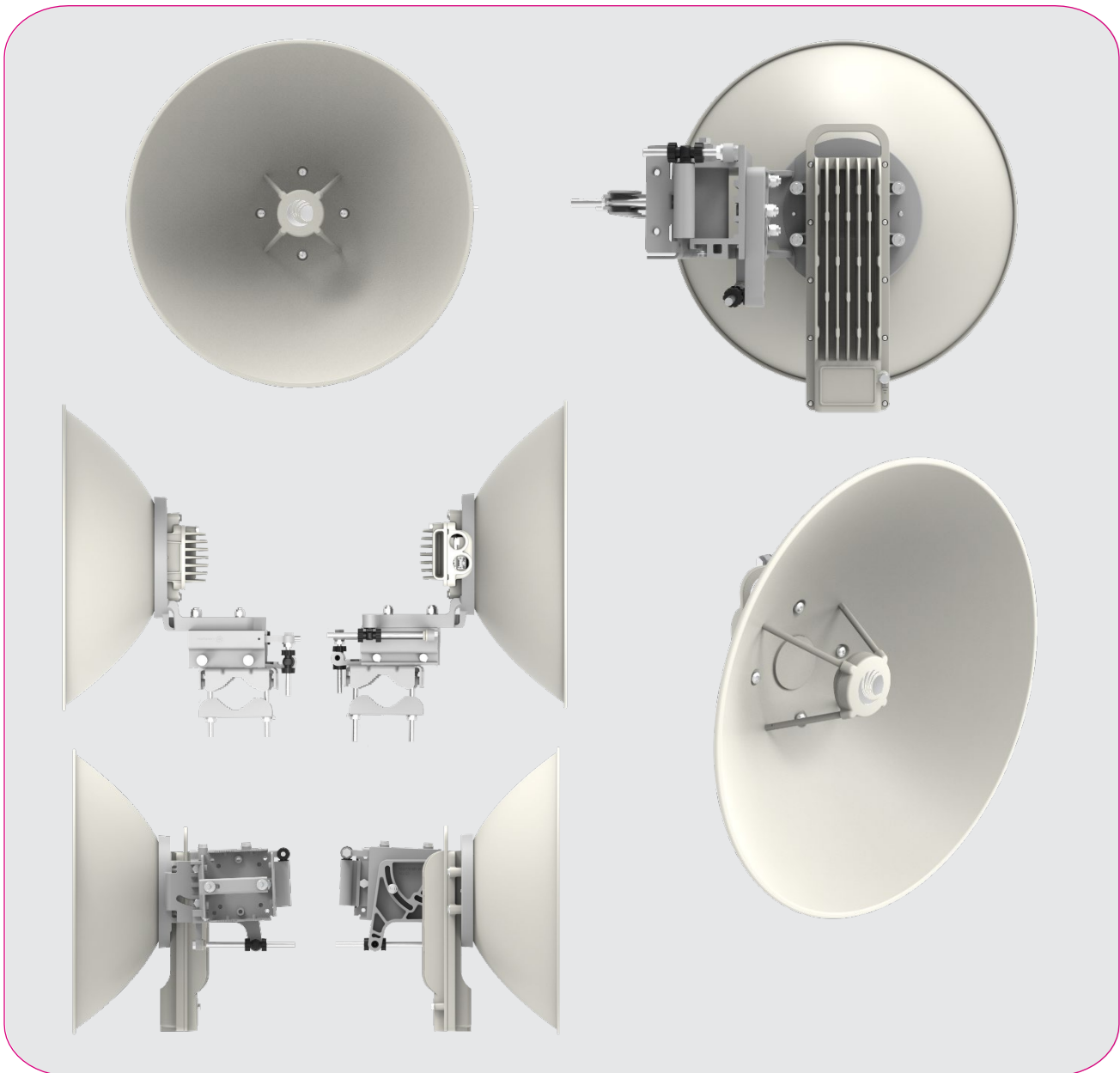
Physical

Mean Time Between Failure	>40 years
Environmental	IP67, IP66
Temperature/Humidity	-40°C to 60°C (-40°F to 140°F), 100% non-condensing
Weight	Dish + Radio: 3.8 kg (8.4 lb); with Precision Bracket: 6.5 kg (14.3 lb)
Wind Loading – Front Facing	@ 145 km/h (90 mph): <207 N @ 200 km/h (124 mph): <395 N
Dimensions	Radio only: 34 x 14 x 8 cm (13.9 x 5.5 x 3.1 in) Assembled unit: 46 cm (18.1 in) diameter, 24 cm (9.4 in) depth
Power Consumption	20 W maximum
Input Voltage	40~60 V DC

Certifications

ISED Canada	RSS-191, SRSP 342.25 & SRSP 325.25
FCC	CFR47 Part 101 & CFR47 Part 30
CE	EN 302 326-2, v2.1.0

cnWave 5G Fixed Customer Premises Equipment



ABOUT CAMBIUM NETWORKS

Cambium Networks enables service providers, enterprises, industrial organizations, and governments to deliver exceptional digital experiences and device connectivity with compelling economics. Our ONE Network platform simplifies management of Cambium Networks' wired and wireless broadband and network edge technologies. Our customers can focus more resources on managing their business rather than the network. We make connectivity that just works.

cambiumnetworks.com