

# 4.4–5.9 GHz Dual-Polarity Parabolic Antennas

## QUICK LOOK:

- **High-gain dual-polarized antennas for 4.4–5.9 GHz**
- **Standard and high-performance**
- **2 ft, 3 ft, and 4 ft dish sizes**
- **Available in white, green, or desert tan**
- **Standard performance, also available with radome**
- **TAA compliant**



Cambium Networks 4.4–5.9 GHz Dual-Polarity Parabolic Antennas are high-gain directional antennas engineered for demanding point-to-point (PTP) wireless links. Available in Standard-Performance and High-Performance configurations, these antennas deliver exceptional signal quality across the 4.4 GHz to 5.925 GHz frequency range.

The product line spans 2-foot, 3-foot, and 4-foot dish sizes to accommodate varying link distances and gain requirements. Each model is available in white, green, and desert tan to suit diverse deployment environments. Standard-Performance models are offered with an optional radome for additional environmental protection.

All models feature dual N-female connectors for horizontal and vertical polarization and are TAA compliant. Designed and tested to MIL-STD-810H standards, these antennas meet rigorous requirements for vibration, temperature extremes, humidity, and corrosion resistance, with an IP67 ingress protection rating.

## APPLICATIONS

- Long-distance, high-throughput PTP radio links
- Tactical and defense communications
- Government and enterprise wireless backhaul
- Fixed wireless infrastructure

## KEY FEATURES

- Standard- and high-performance options
- 2', 3', and 4' parabolic reflectors
- Dual-polarity, 2 x N-female connectors
- SP: bayonet flange, toolless install
- HP: standard flange, tooled install
- MIL-STD-810H and IP67 rated
- Wind Speed:
  - 145 km/h (90 mph) operational
  - 200 km/h (125 mph) survival

## Dual-Polarity Parabolic Antennas

<b>Model Numbers</b>			
	<b>2 ft</b>	<b>3 ft</b>	<b>4 ft</b>
<b>High Performance</b>			
White	N045070D050A	N045070D053A	N045070D056A
Green	N045070D051A	N045070D054A	N045070D057A
Desert Tan	N045070D052A	N045070D055A	N045070D058A
<b>Standard Performance</b>			
White	N045070D059A	N045070D062A	N045070D065A
Green	N045070D060A	N045070D063A	N045070D066A
Desert Tan	N045070D061A	N045070D064A	N045070D067A
<b>Standard Performance with Radome</b>			
White	N045070D068A	N045070D071A	N045070D074A
Green	N045070D069A	N045070D072A	N045070D075A
Desert Tan	N045070D070A	N045070D073A	N045070D076A

<b>Electrical Specifications</b>						
	<b>SPD 2 ft</b>	<b>SPD 3 ft</b>	<b>SPD 4 ft</b>	<b>HPD 2 ft</b>	<b>HPD 3 ft</b>	<b>HPD 4 ft</b>
Bandwidth (GHz)	4.4–5.925	4.4–5.925	4.4–5.925	4.4–5.925	4.4–5.925	4.4–5.925
Low-Band Gain (dBi)	26.2	29.4	32.2	26	29.2	32
Mid-Band Gain (dBi)	27.7	30.7	33.7	27.5	30.5	33.5
High-Band Gain (dBi)	29.7	33.2	35.4	29.5	33	35.2
Polarization	H / V	H / V	H / V	H / V	H / V	H / V
H 3 dB Beamwidth (deg)	6.5	4.5	3.3	6.5	4.5	3.3
V 3 dB Beamwidth (deg)	6.5	4.5	3.3	6.5	4.5	3.3
Front-to-Back Ratio (dB)	38	40	44	40	46	49
Cross-Pol Discrimination (dB)	28	30	30	28	30	30
VSWR (Maximum)	2:1	2:1	2:1	2:1	2:1	2:1
Bandwidth (GHz)	4.4–5.925	4.4–5.925	4.4–5.925	4.4–5.925	4.4–5.925	4.4–5.925

## Dual-Polarity Parabolic Antennas

### Mechanical Specifications

	SPD 2 ft	SPD 3 ft	SPD 4 ft	HPD 2 ft	HPD 3 ft	HPD 4 ft
Interface Type	2 x N-female connectors					
Net Weight	9.8 kg (22 lb)	15.9 kg (35 lb)	27.2 kg (60 lb)	12.2 kg (27 lb)	32.7 kg (72 lb)	38.6 kg (85 lb)
Mounting Pipe Diameter	2 in to 4.5 in					
Fine Azimuth Adjustment	±10°	±10°	±10°	±10°	±10°	±10°
Fine Elevation Adjustment	±30°	±10°	±10°	±30°	±10°	±10°
Feed Style	Bayonet flange, toolless			Standard flange, tooled		
Operating Wind Speed	145 km/h (90 mph)					
Survival Wind Speed	200 km/h (125 mph)					
Radome Material	ABS					
Max Input Power (W)	50					

### Environmental and Compliance

Compliance	RoHS
Vibration	MIL-STD-810H Method 514.8 Cat. 4, Procedure I
Temperature Storage	-50°C to +70°C (-58°F to +158°F)
Temperature Operating	-40°C to +60°C (-40°F to +140°F) (MIL-STD-810H 501.7 / 502.7)
Humidity	MIL-STD-810H 507.6, Procedure I, natural cycle
Corrosion Prevention	MIL-STD-810H method 509.7
Ingress Protection	IP67 (MIL-STD-810H 510.7, dust and rain)

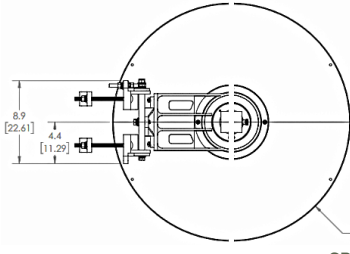
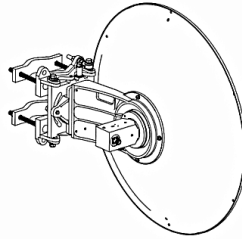
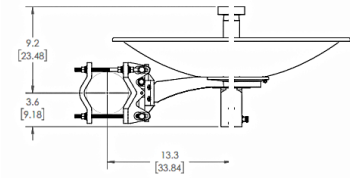
### Packaging and Shipping

	SPD 2 ft	SPD 3 ft	SPD 4 ft	HPD 2 ft	HPD 3 ft	HPD 4 ft
Package Type	Cardboard	Crate	Crate	Cardboard	Crate	Crate
Shipping Dimensions	28"x8"x28"	40"x17"x44"	59"x19"x60"	31"x31"x25"	47"x28"x48"	59"x35"x60"
Gross Weight	11.3 kg (25 lb)	35.2 kg (78 lb)	57.1 kg (126 lb)	21.8 kg (48 lb)	64.9 kg (143 lb)	88.9 kg (196 lb)
Country of Origin	Taiwan	Taiwan	Taiwan	Taiwan	Taiwan	Taiwan

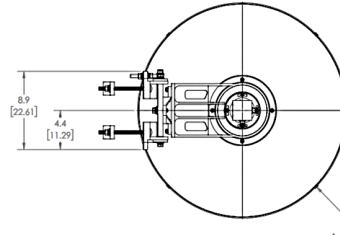
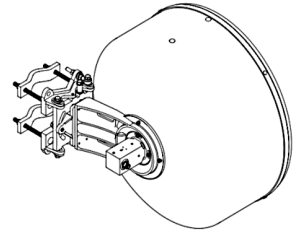
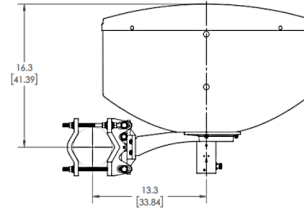
# Dual-Polarity Parabolic Antennas

## Dimensional Drawings

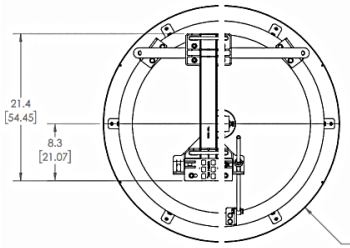
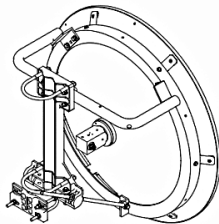
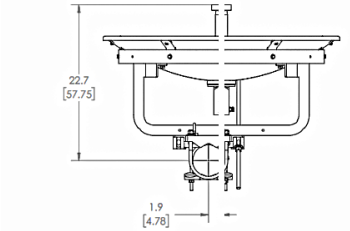
SPD2



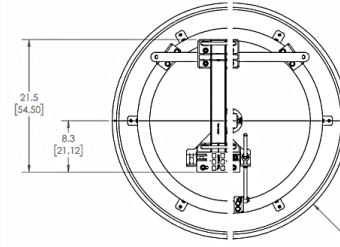
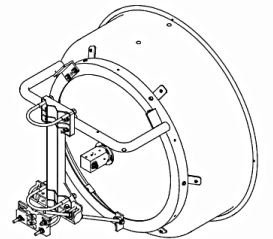
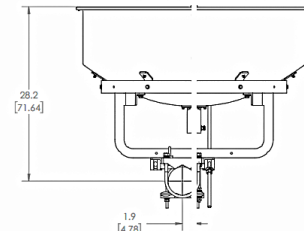
HPD2



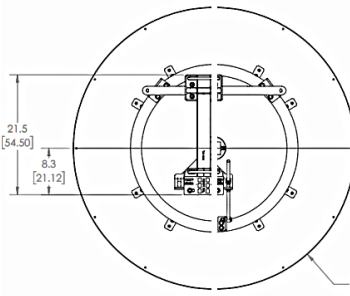
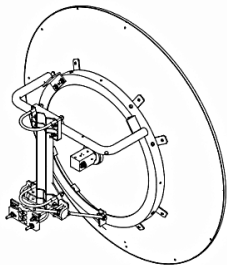
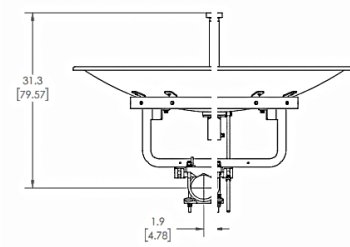
SPD3



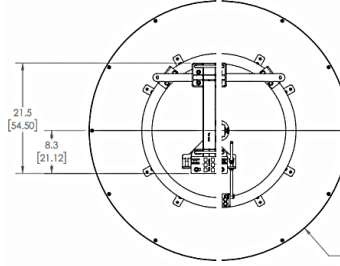
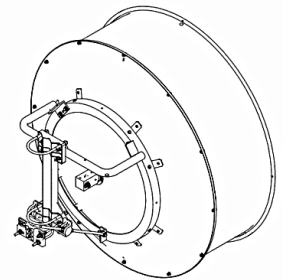
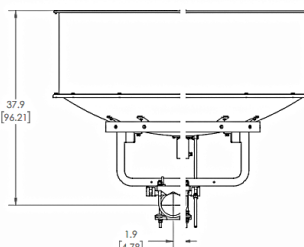
HPD3



SPD4



HPD4



## Dual-Polarity Parabolic Antennas

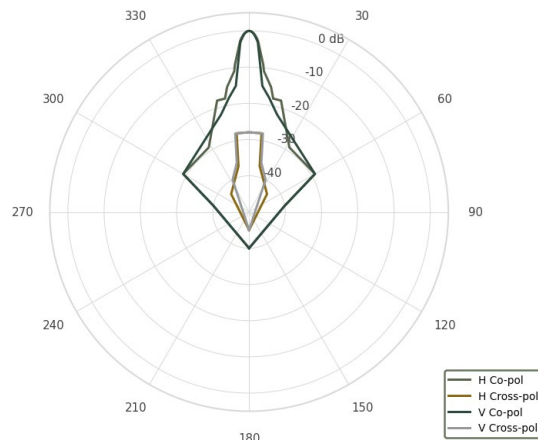
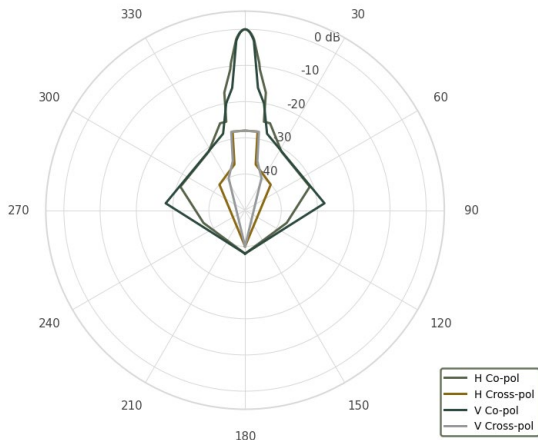
### Antenna Patterns

#### Standard Performance

#### High Performance

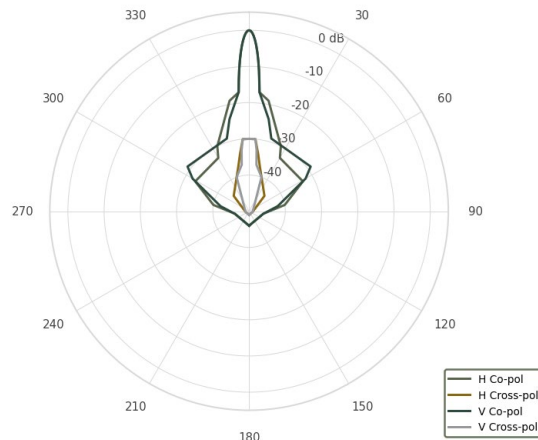
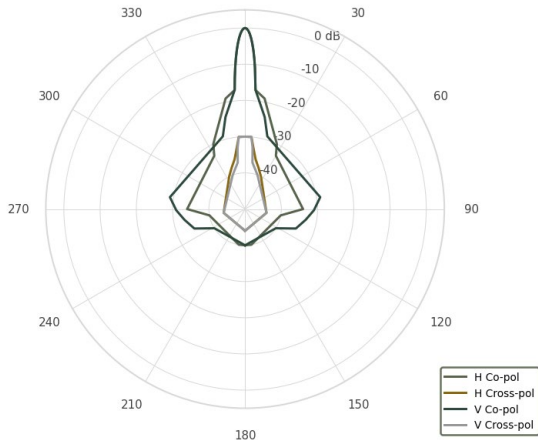
**SPD2-45W**

**HPD2-45W**



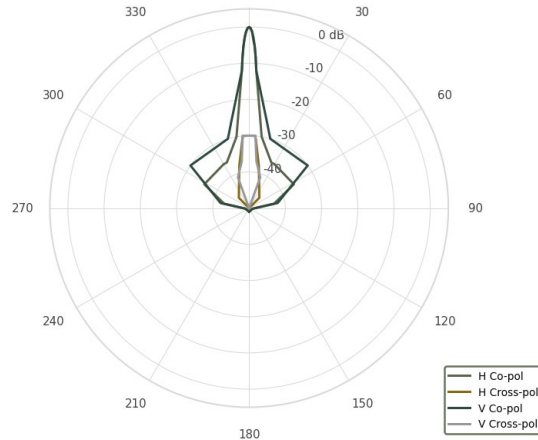
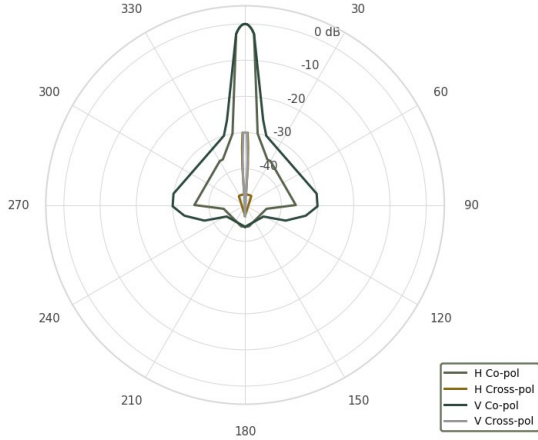
**SPD3-45W**

**HPD3-45W**



**SPD4-45W**

**HPD4-45W**



#### ABOUT CAMBIUM NETWORKS

Cambium Networks enables service providers, enterprises, industrial organizations, and governments to deliver exceptional digital experiences, and device connectivity, with compelling economics. Our ONE Network platform simplifies management of Cambium Networks' wired and wireless broadband and network edge technologies. Our customers can focus more resources on managing their business rather than the network. We deliver connectivity that just works.

[cambiumnetworks.com](https://cambiumnetworks.com)

05052026