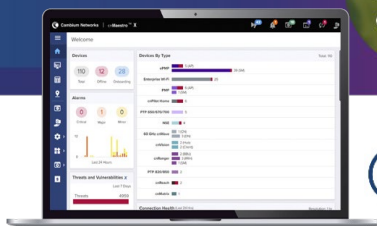


# cnWave 60 GHz V2000i

## Industrial Client Node

### V2000i Quick Look

- Supports 57–66 GHz
- Up to 3.6 Gbps (1.8 Gbps DL & 1.8 Gbps UL); channel bonding typically doubles capacity
- C1D2 and ATEX Cat3/Zone2 Certification for hazardous environments
- Auto-beamforming, +/-10° horizontal, +/- 4.0° vertical
- 2.5 GbE PoE input AND 2.5 GbE 802.3at PoE output port for powering external devices
- 802.11ay technology with Terragraph certification



### Designed for High-Speed and High-Density Deployments

Cambium Networks' cnWave™ 60 GHz solution provides easy, fast, and cost-effective wireless gigabit connectivity for edge access and/or high-capacity backhaul for edge access solutions at a significantly lower total cost of ownership (TCO) than fiber infrastructure. **Industrial operators now have access to multi-gigabit connectivity.**

V2000i features a 2.5 GbE PoE input port as well as a 2.5 GbE PoE 802.3at output port for powering Wi-Fi access points (AP) or video surveillance cameras. This makes the V2000 especially well-suited to backhaul Cambium's XV2 series of outdoor Wi-Fi APs.

### Certified for Industrial C1D2 and ATEX

Now the V2000i (and V5000i) offer industrial operators the ability to deploy in hazardous environments. Certified to C1D2 HAZLOC and ATEX Equipment Group II for intrinsically safe deployments. This opens up many new applications where multi-Gbps capacity is required in hazardous areas such as oil refineries, well pads, pipelines, chemical plants, freight yards for hazardous material offloads, and ports.

### Cloud and On-Premises Management

cnWave 60 GHz operates with Cambium Networks' cnMaestro™ Network Management System—available in both cloud-based and on-premises software platform for secure, end-to-end network control. cnMaestro simplifies device management by offering full network visibility and zero-touch provisioning. View and perform a full suite of wireless network management functions in real time.

## cnWave 60 GHz V2000i

### Spectrum

**Frequency Range** 57 GHz to 66 GHz in a single SKU

**Channel Width** 2.16 GHz, 4.32 GHz\*

**Carrier Bonding\*** Up to 2 adjacent channels

**Mode of Operation** PMP client or PTP

\*Available in future release

### Interface

**Channel Access** TDMA/TDD

**Ethernet Interface** 1 x 2.5 GbE PoE Input  
1 x 2.5 GbE PoE 802.3at Output

### Networking

**Protocols Supported** IPv4, IPv6, Layer2 bridge, Layer3 IPv6 routing, Open/R distributed networking

**Network Management** cnMaestro, HTTP, HTTPS, SNMP v2c & v3

**MTU** 1,900 bytes

**VLAN** 802.1ad (QinQ), 802.1Q with 802.1p priority

### Security

**Encryption** 128-bit AES

**Firmware** Signed firmware images

### Certifications for Hazardous Environments

**HAZLOC** HAZLOC Class 1 Location  
Division 2  
Gas Groups A, B, C, D – acetylene, hydrogen, ethylene, and propane

**ATEX, IECEx** IECEx, ATEX:  
Equipment Group II  
Category 3 / Zone 2  
Gas Group IIC  
Temperature Class T4 – 135° C

### Performance

**Modulation & Coding Schemes** MCS-0 (BPSK) to MCS-12 (16-QAM-3/4)

**Latency** < 1 ms

**Maximum EIRP** 49 dBm

## cnWave 60 GHz V2000i

### Antenna

Gain	34.5 dBi
Type	Integrated
Beamforming Scan Range	+/- 10° azimuth, +/- 4.0° elevation

### Powering

Type	802.3at
Power Consumption	18W (48W when using PoE output port)

### Environmental

Environmental	IP66/67
Temperature	-40°C to 60°C (-40°F to 140°F)
Mean Time Between Failure	> 40 years
Weight	1.9 kg (4.2 lb) with bracket
Dimensions (H x W x D)	249 mm x 166 mm x 220 mm (9.8 in x 6.5 in x 8.7 in)
Wind Survival	200 km/h (124 mi/h)

### Antenna

Power Supply	V2000i ships with the radio only. A suitable 802.3at-compatible power injector should be used. Cambium offers an indoor PoE injector that must be installed in an approved ATEX/HAZLOC enclosure for those applications.
N000000L142A	PoE, 60W, 56V, 5GbE DC Injector, Indoor, Energy Level 6 Supply, accepts C5 connector
N000900L031A	CABLE, UL POWER SUPPLY CORD SET, 720mm, US
C000000L176A	Cable Gland for 4-6mm cable, M25, Qty 10

## cnWave 60 GHz V2000i



Side



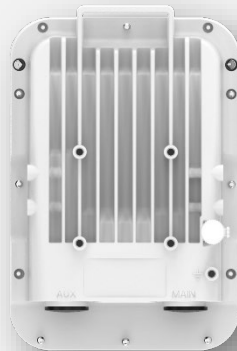
Front



Back Oblique Pole  
Mounted



Top



Back



Bottom

## cnWave 60 GHz V2000i

### Ordering Information

**C600500C120A** 60GHz cnWave V2000i Client Node Radio Only

### Extended Warranty, Cambium Care, cnMaestro Ordering Information

<b>CCPRM-SUP-V2000I-1</b>	Cambium Care Prime, 1-year support for one V2000i . 24x7 TAC SLA support, SW updates, and ARAR for HW
<b>CCPRM-SUP-V2000I-3</b>	Cambium Care Prime, 3-year support for one V2000i . 24x7 TAC SLA support, SW updates, and ARAR for HW
<b>CCPRM-SUP-V2000I-5</b>	Cambium Care Prime, 5-year support for one V2000i . 24x7 TAC SLA support, SW updates, and ARAR for HW
<b>CCADV-SUP-V2000I-1</b>	Cambium Care Advanced, 1-year support for one V2000i . 24x7 TAC support, SW updates, and NBDS advance replacement for HW
<b>CCADV-SUP-V2000I-3</b>	Cambium Care Advanced, 3-year support for one V2000i . 24x7 TAC support, SW updates, and NBDS advance replacement for HW
<b>CCADV-SUP-V2000I-5</b>	Cambium Care Advanced, 5-year support for one V2000i . 24x7 TAC support, SW updates, and NBDS advance replacement for HW
<b>CCADV-UPG-V2000I-1</b>	Cambium Care Advanced Add-on to cnMaestro X, 1-year support for one V2000i. 24x7 TAC support, SW updates, and NBDS advance replacement for HW
<b>CCADV-UPG-V2000I-3</b>	Cambium Care Advanced Add-on to cnMaestro X, 3-year support for one V2000i. 24x7 TAC support, SW updates, and NBDS advance replacement for HW
<b>CCADV-UPG-V2000I-5</b>	Cambium Care Advanced Add-on to cnMaestro X, 5-year support for one V2000i. 24x7 TAC support, SW updates, and NBDS advance replacement for HW
<b>CCPRO-SUP-V2000I-1</b>	Cambium Care Pro, 1-year support for one V2000i. 24x7 TAC support, SW updates
<b>CCPRO-SUP-V2000I-3</b>	Cambium Care Pro, 3-year support for one V2000i. 24x7 TAC support, SW updates
<b>CCPRO-SUP-V2000I-5</b>	Cambium Care Pro, 5-year support for one V2000i. 24x7 TAC support, SW updates
<b>CCPRM-RNW-V2000I-1</b>	Cambium Care Prime, 1-year support renewal for one V2000i . 24x7 TAC SLA support, SW updates, and ARAR for HW
<b>CCPRM-RNW-V2000I-3</b>	Cambium Care Prime, 3-year support renewal for one V2000i . 24x7 TAC SLA support, SW updates, and ARAR for HW
<b>CCPRM-RNW-V2000I-5</b>	Cambium Care Prime, 5-year support renewal for one V2000i . 24x7 TAC SLA support, SW updates, and ARAR for HW
<b>CCADV-RNW-V2000I-1</b>	Cambium Care Advanced, 1-year support renewal for one V2000i. 24x7 TAC support, SW updates, and NBDS advance replacement for HW
<b>CCADV-RNW-V2000I-3</b>	Cambium Care Advanced, 3-year support renewal for one V2000i. 24x7 TAC support, SW updates, and NBDS advance replacement for HW
<b>CCADV-RNW-V2000I-5</b>	Cambium Care Advanced, 5-year support renewal for one V2000i. 24x7 TAC support, SW updates, and NBDS advance replacement for HW
<b>CCADV-UPG-RNW-V2000I-1</b>	Cambium Care Advanced Add-on to cnMaestro X, 1-year support renewal for one V2000i. 24x7 TAC support, SW updates, and NBDS advance replacement for HW
<b>CCADV-UPG-RNW-V2000I-3</b>	Cambium Care Advanced Add-on to cnMaestro X, 3-year support renewal for one V2000i. 24x7 TAC support, SW updates, and NBDS advance replacement for HW

Continued on next page.

## cnWave 60 GHz V2000i

### Extended Warranty, Cambium Care, cnMaestro Ordering Information, Continued

<b>CCADV-UPG-RNW-V2000I-5</b>	Cambium Care Advanced Add-on to cnMaestro X, 5-year support renewal for one V2000i. 24x7 TAC support, SW updates, and NBDS advance replacement for HW
<b>CCPRO-RNW-V2000I-1</b>	Cambium Care Pro, 1-year support renewal for one V2000i. 24x7 TAC support, SW updates
<b>CCPRO-RNW-V2000I-3</b>	Cambium Care Pro, 3-year support renewal for one V2000i. 24x7 TAC support, SW updates
<b>CCPRO-RNW-V2000I-5</b>	Cambium Care Pro, 5-year support renewal for one V2000i. 24x7 TAC support, SW updates
<b>EW-E1CNWV2000I-WW</b>	60 GHz V2000i Extended Warranty, 1 Additional Year
<b>EW-E2CNWV2000I-WW</b>	60 GHz V2000i Extended Warranty, 2 Additional Years
<b>AR-E0CNWV2000I-WW</b>	60 GHz V2000i Upgrade to All Risks Advanced Replacement Program during 3 year standard warranty
<b>AR-E1CNWV2000I-WW</b>	60 GHz V2000i All Risks Advance Replacement, 1 additional Year
<b>AR-E2CNWV2000I-WW</b>	60 GHz V2000i All Risks Advance Replacement, 2 additional Years

### ABOUT CAMBIUM NETWORKS

Cambium Networks enables service providers, enterprises, industrial organizations, and governments to deliver exceptional digital experiences and device connectivity with compelling economics. Our ONE Network platform simplifies management of Cambium Networks' wired and wireless broadband and network edge technologies. Our customers can focus more resources on managing their business rather than the network. We make connectivity that just works.

[cambiumnetworks.com](https://cambiumnetworks.com)

08012025