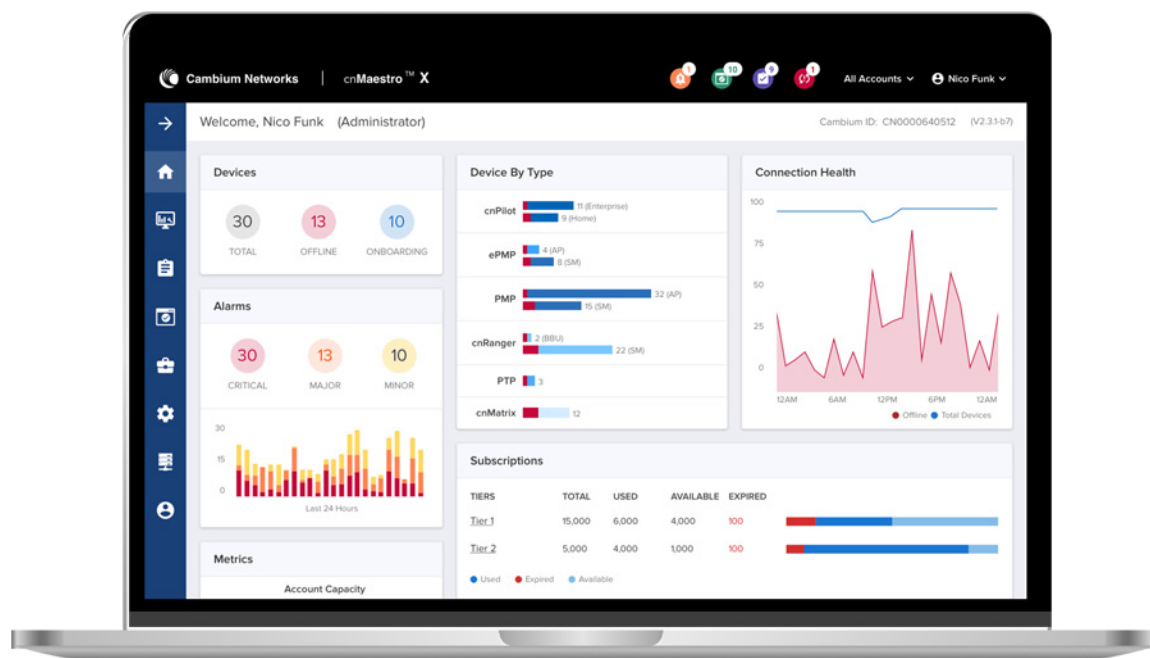


# Secure, Reliable, and Trusted: Why cnMaestro Is Built for Your Peace of Mind

At Cambium Networks, we know how much you rely on cnMaestro™ Network Management to keep your network running. That is why we've designed it with the highest standards for security, reliability, and operational excellence—ensuring your network performs flawlessly while keeping your data safe. Here's how we do it and how it benefits you.



cnMaestro Console

## > Built-In Security: Your Data, Always Protected

When it comes to network management, security isn't optional—it's essential. cnMaestro is designed SOC 2 Type II compliant to protect your network and data at every level, giving you peace of mind.

### HOW WE KEEP YOU SECURE

- **Granular Access Controls:** Limit access to only the people who need it, with role-based permissions and multi-factor authentication (MFA).
- **End-to-End Encryption:** Your data is always protected, whether it's at rest or in transit, using industry-leading encryption.
- **Proactive Threat Monitoring:** We use advanced tools to detect and respond to suspicious activity before it becomes a problem.

### > WHAT THIS MEANS FOR YOU

- Confidence that your network and sensitive information are secure
- Simplified user management with the assurance that no one can access more than they need
- Faster resolution of potential security issues, keeping your operations running smoothly



## > Reliable by Design: Always-On Availability

Downtime isn't just inconvenient—it's costly. That's why cnMaestro is built for high availability and uninterrupted service, so your network works when you need it most.

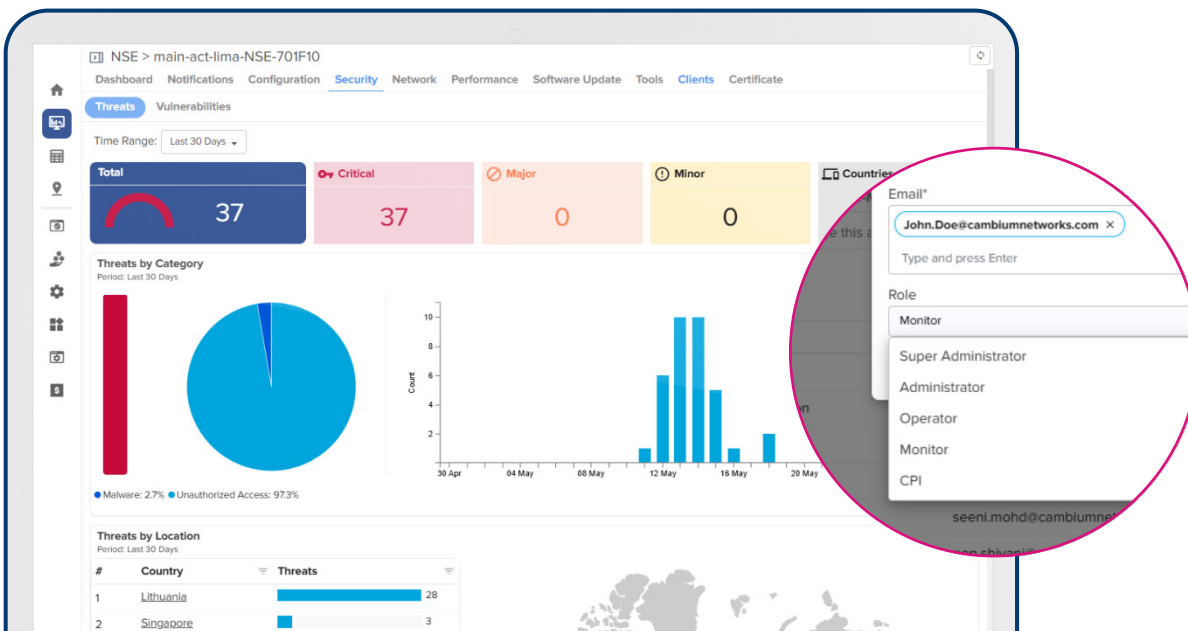
### HOW WE STAY RELIABLE

- **High-Availability Architecture:** Redundant systems in multiple datacenters ensure there's always a backup ready to go.
- **Disaster Recovery Plans:** We're prepared for the unexpected with clear recovery objectives to get you back online fast.
- **24/7 Monitoring:** Around-the-clock monitoring keeps tabs on performance, so we catch and fix issues before they affect you.



### WHAT THIS MEANS FOR YOU

- Peace of mind knowing your network management tools are available when you need them
- Reliable performance, even during peak usage
- Minimal disruption to your operations, thanks to proactive issue detection



User Roles and NSE console

## > Precision in Every Process: Integrity You Can Trust

Managing complex networks requires a platform that does exactly what it's supposed to—every time. cnMaestro ensures accurate, reliable operations with a 99.99% uptime service level agreement (SLA), robust controls, and processes.

### HOW WE ENSURE INTEGRITY

- **Change Management:** Every update and change is carefully planned and tested before deployment.
- **Automation with Oversight:** Automated pipelines reduce errors while logs and alerts keep us accountable.
- **Data Consistency Checks:** We validate every step of the process to ensure your data is always accurate.



### WHAT THIS MEANS FOR YOU

- Smooth, error-free updates and new features
- Confidence that your network is being managed with precision and care
- Simplified troubleshooting with a clear record of system activity

## > Built for Transparency: Your Trusted Partner

We believe trust starts with clear communication and accountability. With cnMaestro, you're always in the loop and in control.

### HOW WE BUILD TRANSPARENCY

- **Proactive Communication:** You'll always know about planned updates before they happen.
- **Auditability:** We provide logs and summaries to keep you informed and compliant.
- **Customer-Centric Documentation:** From quick-start guides to deep-dive resources, we make it easy to find what you need.
- **Product Status:** The latest status on all Cambium cloud services, including cnMaestro, is posted on our Cloud Status page at <https://status.cambiumnetworks.com>. You can sign up for proactive notices from this page as well.



### WHAT THIS MEANS FOR YOU

- Fewer surprises and more confidence in your network operations
- Easy access to the information you need to meet your compliance or operational requirements

## > Scale your Network with Your Growing Business Needs

cnMaestro currently manages millions of devices in live environments, with individual accounts handling over 25,000 devices on a single cloud instance. Its proven scalability supports deployments across more than 190 countries, making it a reliable choice for global expansion. Trusted by leading enterprises, managed service providers (MSP), and organizations around the world, cnMaestro scales to handle small- to large-scale, mission-critical networks with ease. Whether you're adding new sites or transitioning your entire infrastructure, the platform delivers consistent, dependable performance.

### > WHAT THIS MEANS FOR YOU

- **Effortless Scalability:** Grow from hundreds to thousands of devices without changing platforms.
- **Global-Ready:** Manage networks across 190+ countries within a single pane of glass.
- **Enterprise-Grade Reliability:** cnMaestro is trusted by top organizations around the world to support their critical network requirements.
- **Future-Proof Infrastructure:** Add new sites or services without worrying about performance limits

With cnMaestro, you get more than a cloud application—you get a trusted partner in managing and monitoring your network. From keeping your data secure to ensuring maximum uptime and performance, we've got you covered. When you choose cnMaestro, you choose a platform that's built with your needs in mind, so you can focus on what matters most—growing your business.

If you have questions or unique requirements, let's talk! Reach out to us at <https://www.cambiumnetworks.com/contact-us/>. We're here to help make cnMaestro work for you.



### About Cambium Networks

Cambium Networks enables service providers, enterprises, industrial organizations, and governments to deliver exceptional digital experiences and device connectivity with compelling economics. Our ONE Network platform simplifies management of Cambium Networks' wired and wireless broadband and network edge technologies. Our customers can focus more resources on managing their business rather than the network. We make connectivity that just works.