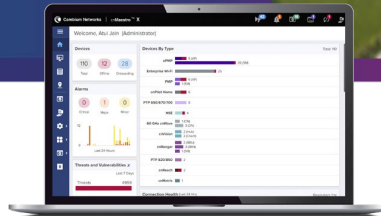


ePMP 6 GHz Force 4625 Series Subscriber Module

ePMP 4625 SM QUICK LOOK:

- High-performance subscriber modules for PTP and PMP fixed wireless broadband applications
- 1 Gbps capacity leveraging 160 MHz channels
- Interoperates in PMP applications with ePMP 4600 APs
- 3-year hardware warranty



Service providers face ever-increasing demand for capacity in a limited amount of spectrum. Cambium Networks ePMP™ Force 4625 Subscriber Modules (SM) meets this demand offering high performance and low latency across both point-to-multipoint (PMP) and point-to-point (PTP) deployments.

The Force 4625 SM is offered with a 25 dBi integrated dish antenna.

Both Models Include the Following:

- High capacity and latencies less than 5 ms when using ePTP technology.
- Interoperability with ePMP 4600 Series Access Points (AP).
- Provides 1 Gbps capacity in PTP applications, meeting the requirements of enterprise, industrial, government, and service provider users.
- Managed by Cambium Networks cnMaestro™ Network Management System for easy provisioning, monitoring, and upgrades.
- Network planning with LINKPlanner and cnHeat.
- Cambium Networks' 3-year hardware warranty and support.
- Includes a Power over Ethernet (PoE) injector and pole mount hardware.

Force 4625 Subscriber Module

Spectrum

Channel Width MHz	20 40 80 160 MHz
Proprietary Physical Layer	ePMP air interface with 2x2 MIMO/OFDMA
Channel Spacing	Configurable in 5 MHz increments
Frequency Range	Force 4625: 5925–7125 MHz ¹

¹ Allowable frequencies and bands are dictated by individual country regulations. Operation under AFC (Automatic Frequency Coordination) control in FCC jurisdictions.

MAC Layer (Media Access Control)	Cambium proprietary
Ethernet Interface	100/1000 BaseT, rate auto negotiated, 802.3at compliant
Protocols Used	IPv4/IPv6, UDP, TCP, IP, ICMP, SNMPv2c, HTTPs, STP, SSH, IGMP snooping
Network Management	HTTP/HTTPS, SNMPv1/2, SNMPv3, SSH
VLAN	802.1Q with 802.1p priority

Performance

ARQ	Yes
Nominal Receive Sensitivity (w/FEC) @20 MHz Channel	MCS 0 = -92 dBm to MCS 11 (1024 QAM-5/6) = -61 dBm (per chain)
Nominal Receive Sensitivity (w/FEC) @40 MHz Channel	MCS 0 = -89 dBm to MCS 11 (1024 QAM-5/6) = -58 dBm (per chain)
Nominal Receive Sensitivity (w/FEC) @80 MHz Channel	MCS 0 = -86 dBm to MCS 11 (1024 QAM-5/6) = -55 dBm (per chain)
Nominal Receive Sensitivity (w/FEC) @160 MHz Channel	MCS 0 = -86 dBm to MCS 11 (1024 QAM-5/6) = -51 dBm (per chain)
Modulation Levels (Adaptive)	MCS 0 (BPSK) to MCS 11 (1024 QAM-5/6)
Geolocation	External USB GPS receiver
Transmit Power Range	+3 to +28 dBm (combined, to regional EIRP limit) (1 dB interval)
QoS (Quality of Service)	Three-level priority (voice, high, low) with packet classification by DSCP, COS, VLAN ID, IP & MAC address, broadcast, multicast, and station priority

Physical

Surge Suppression	1 Joule Integrated
Environmental	IP55
Temperature	-40°C to 55°C (-40°F to 131°F)
Weight	2.76 kg (6.1 lb)
Dimensions (Dia x Depth)	472 x 472 x 296 mm (18.5 x 18.5 x 11.7 in)
Pole Diameter Range	Center: 3.1 to 7.6 cm (1.25 to 3.0 in)
Power Consumption	13W (up to 15W in extreme cold temperatures when heater is activated)
Input Voltage	44V–59V
Antenna	25 dBi Integrated Dish
GPS Antenna Connection	External USB GPS receiver with integrated antenna for regions requiring geolocation GPS Integrated Receiver: Part # N000940L001A

Force 4625 Subscriber Module

Security

Encryption 128-bit AES (CCMP mode), 256-bit AES optional, where allowed

Certifications

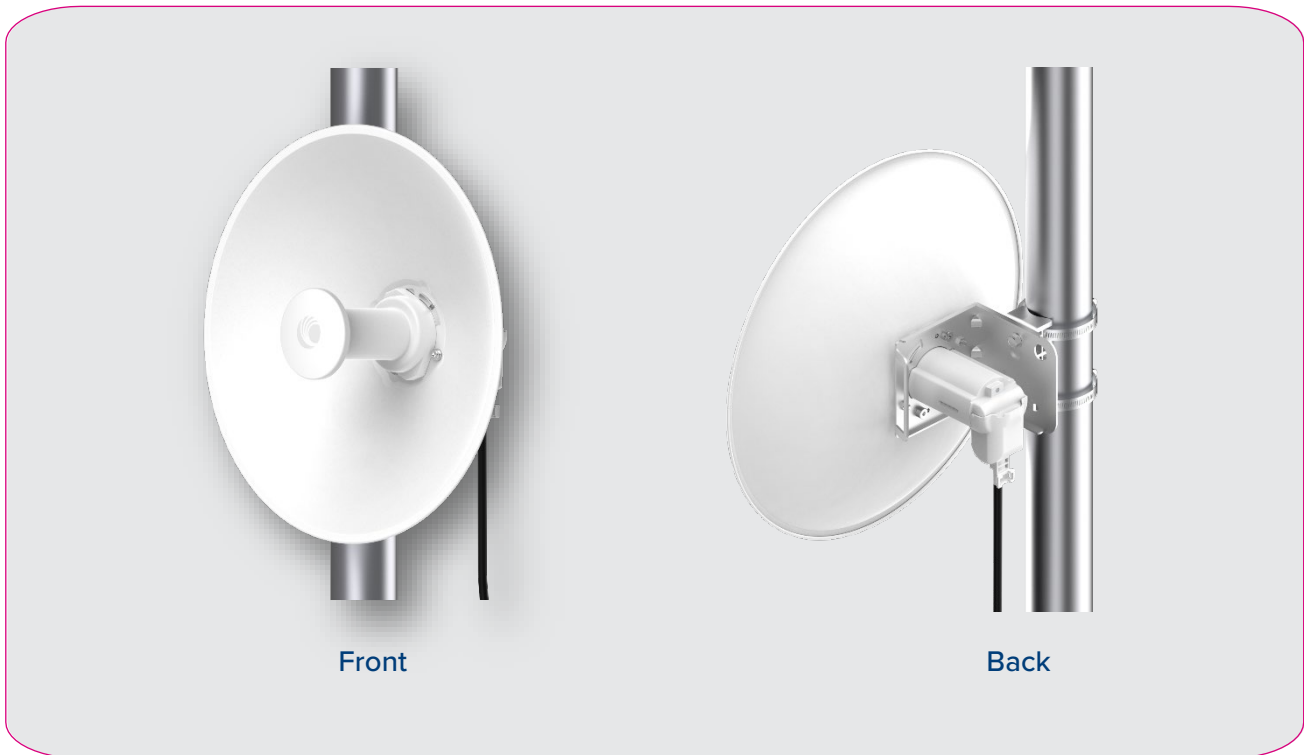
FCCID Z8H89FT0075

FCC Regulatory Part # C068940P142A

ETSI Regulatory Part # C060940P041A

Industry Canada Cert 109W-0075

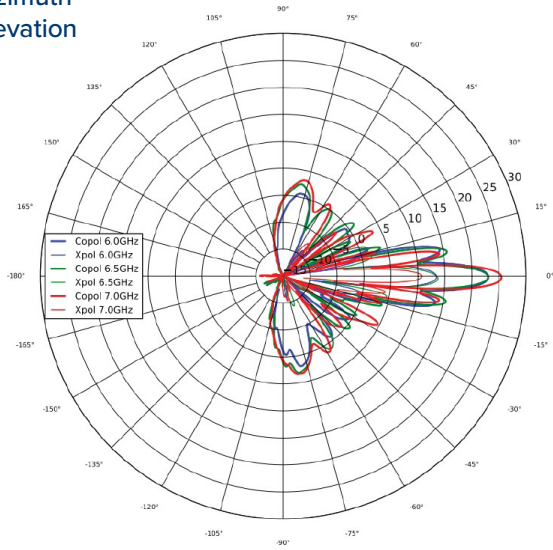
CE Visit cambiumnetworks.com for declaration of conformity.



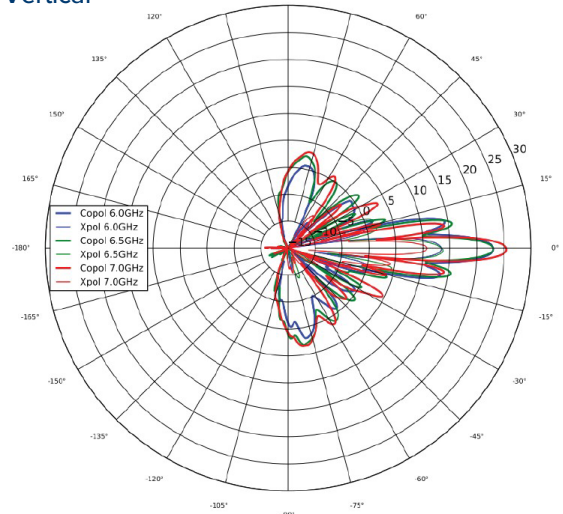
Force 4625 Subscriber Module

Force 4625 Antenna Patterns

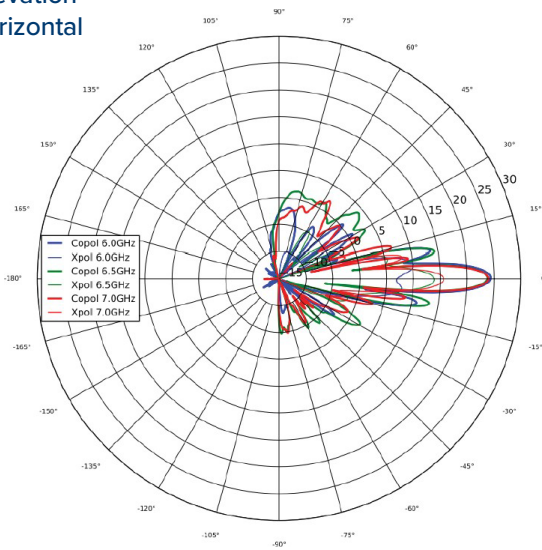
**Azimuth
Elevation**



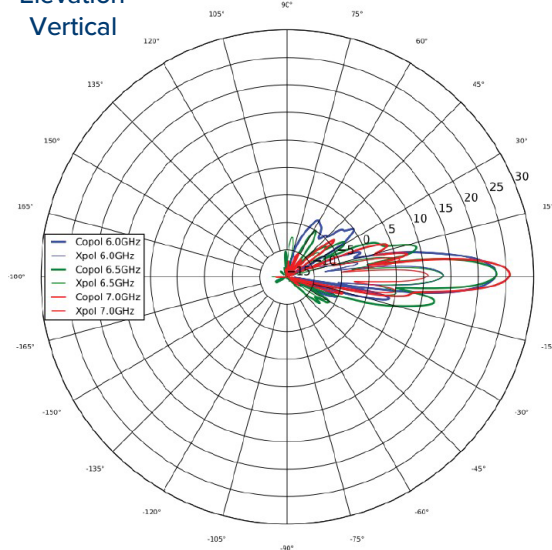
**Azimuth
Vertical**



**Elevation
Horizontal**



**Elevation
Vertical**



Force 4625 Subscriber Module

Ordering Information

C060940M041A	ePMP 6 GHz Force 4625 SM 4-Pack packaging, priced per radio (ROW) (no cord)
C060940M141A	ePMP 6 GHz Force 4625 SM 4-Pack packaging, priced per radio (ROW) (US cord)
C060940M241A	ePMP 6 GHz Force 4625 SM 4-Pack packaging, priced per radio (ROW) (EU cord)
C060940M243A	ePMP 6 GHz Force 4625 SM 4-Pack packaging, priced per radio (EU) (EU cord)
C060940M341A	ePMP 6 GHz Force 4625 SM 4-Pack packaging, priced per radio (ROW) (UK cord)
C060940M343A	ePMP 6 GHz Force 4625 SM 4-Pack packaging, priced per radio (EU) (UK cord)
C060940M441A	ePMP 6 GHz Force 4625 SM 4-Pack packaging, priced per radio (ROW) (India cord)
C060940M445A	ePMP 6 GHz Force 4625 SM 4-Pack packaging, priced per radio (India) (India Cord)
C060940M541A	ePMP 6 GHz Force 4625 SM 4-Pack packaging, priced per radio (ROW) (China cord)
C060940M641A	ePMP 6 GHz Force 4625 SM 4-Pack packaging, priced per radio (ROW) (Brazil cord)
C060940M741A	ePMP 6 GHz Force 4625 SM 4-Pack packaging, priced per radio (ROW) (Argentina cord)
C060940M841A	ePMP 6 GHz Force 4625 SM 4-Pack packaging, priced per radio (ROW) (ANZ cord)
C060940M941A	ePMP 6 GHz Force 4625 SM 4-Pack packaging, priced per radio (ROW) (South Africa cord)
C068940M142B	ePMP 6 GHz Force 4625 SM 4-Pack packaging, priced per radio (FCC/IC) (US Cord)
C060940M246A	ePMP 6 GHz Force 4625 SM 4-Pack packaging, priced per radio (Indonesia) (EU Cord)

ABOUT CAMBIUM NETWORKS

Cambium Networks enables service providers, enterprises, industrial organizations, and governments to deliver exceptional digital experiences and device connectivity with compelling economics. Our ONE Network platform simplifies management of Cambium Networks' wired and wireless broadband and network edge technologies. Our customers can focus more resources on managing their business rather than the network. We make connectivity that just works.

cambiumnetworks.com

05072024